

Playberry Free Sample Font

Join Connect

A B C D E F G H I J K L M

N O P Q R S T U V W X Y Z

a b c d e f g h i j k l m

n o p q r s t u v w x y z

0 1 2 3 4 5 6 7 8 9

The quick brown

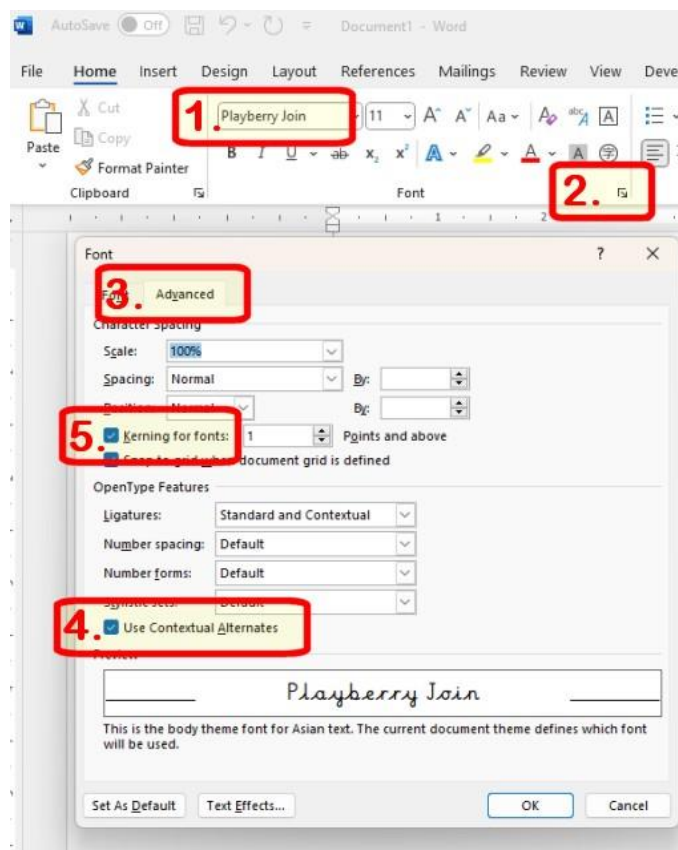
fox jumps over the

lazy dog.

Playberry Free Sample Font

Instructions for Microsoft Word

In most applications which support OpenType fonts (e.g. Smart Notebook 18, Microsoft Publisher, Mac Pages, Libre Office etc), the fonts will join automatically without you having to do anything. In Microsoft Word you will need to turn on OpenType font features (Contextual Alternates) so that the letters join correctly:



1. In Microsoft Word, select one of the Playberry join fonts from the dropdown font menu (this is in the **Home** tab).
2. Click the small arrow next to the word **Font** (or hold down Ctrl and press D).
3. The Font Format dialogue box will appear – click on the **Advanced** tab.
4. Click the checkbox in the OpenType features section to tick **Use Contextual Alternates**.
5. Click the checkbox to select **Kerning for fonts** (optional).

These settings will remain in place until you change to a different font which doesn't have OpenType features. Then if you change the font back to Playberry, OpenType font features will need to be turned on again as above.

It can be annoying having to turn on OpenType font features in Microsoft Word. To avoid this, you can:-

- Click the **Set As Default** button at the bottom of the font formatting dialogue box once you've got the settings as you want them. This will let you change the **Normal** template to always start Word with these font settings.
- If you don't want to change the Normal template, you can create a new template for when you want to use Playberry fonts. Set the font features in the font format dialogue box as shown above. Click **File – Save As** and choose Word Template (*.dotx) as the file type. Save it somewhere easy to find, such as on your desktop. Then when you want a new blank document with OpenType font features already turned on, just double-click the template and it will open in Word.

Playberry Free Sample Font

Characters included in this font

!"#\$%&'()*+,-./ 0123456789.:;<=
>?@ABCDEFGHIJKLMN OPQRSTUVWXYZ
[\] ^ _ ` abcdefghijklmnopqr s
tuvwxyz { | } ~ ¡ ¢ £ € ¥ ¦ § ¨ © ª « ¬ ® ¯ ° ±
² ³ ´ µ ¶ · ¸ ¹ º » ¼ ½ ¾ ¿ À Á Â Ã Ä Å Æ Ç È É Ê Ë Ì Í Î
Ï Ð Ñ Ò Ó Ô Õ Ö × Ø Ù Ú Û Ü Ý Þ ß à á â ã ä å æ ç è é ê ë ì í î ï ð ñ ò ó ô õ ö ÷ ø ù ú û ü ý þ ÿ Ä Å
Ā ā Ă ă Ą ą Ć ć Ĉ ĉ Ċ ċ Ď ě Đ đ Ē ē Ė ė Ę ę Ğ ğ Ġ ġ Ģ ģ Ĥ ĥ Ħ ħ Ĩ ĩ Ī ī Ĭ ĭ Ĵ ĵ Ķ ķ Ļ ļ Ľ ľ Ŀ ŀ Ł ł Ń ń Ņ ņ Ň ň
' n Ŋ ŋ Ō ō Ŏ ŏ Ő ő Œ œ Ř ř Ŕ ŕ Ŗ ŗ Ř ř Š š Ś ś Ŝ ŝ Ş ş Š š Ţ ţ Ť ť Ŧ ŧ Ũ ũ Ū ū Ŭ ŭ Ů ů Ű ű Ų ų Ŵ ŵ Ŷ ŷ Ź ź Ż ż Œ œ Š š Ţ ţ
^ ˇ ˘ ˙ ˚ ˛ ˜ ˝ ; π